

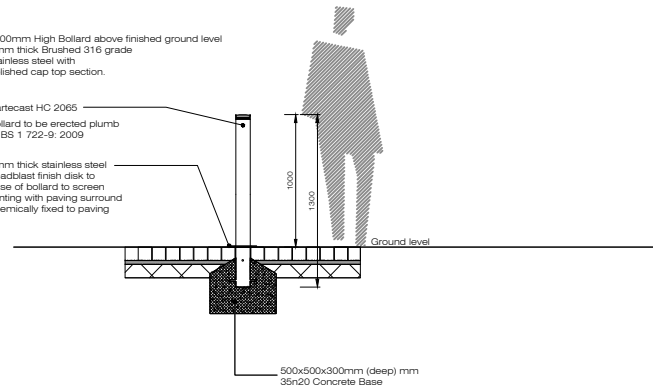


Title

1000mm High Bollard above finished ground level
3mm thick Brushed 316 grade stainless steel with polished cap top section.

Hartecast HC 2065
Bollard to be erected plumb to BS 1 722-9: 2009

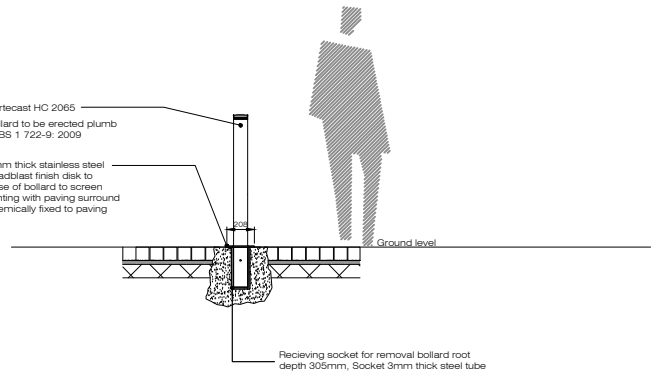
3mm thick stainless steel beadblast finish disk to base of bollard to screen jointing with paving surround chemically fixed to paving



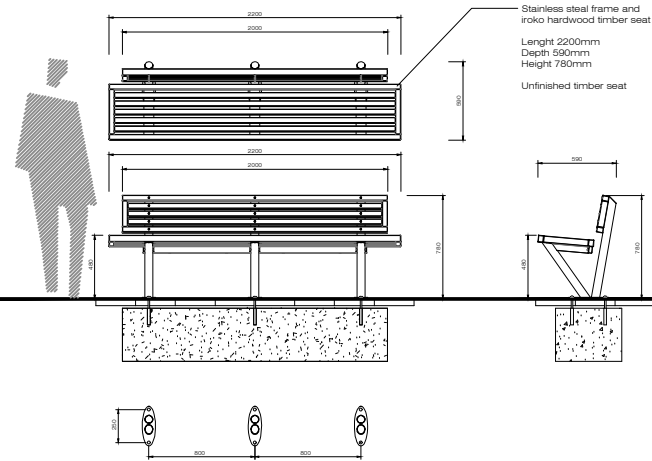
D 01 LD-04-PP Fixed Bollards
See LP-01-PP for location
Scale 1:20

Hartecast HC 2065
Bollard to be erected plumb to BS 1 722-9: 2009

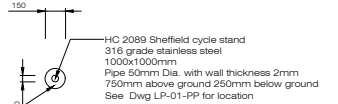
3mm thick stainless steel beadblast finish disk to base of bollard to screen jointing with paving surround chemically fixed to paving



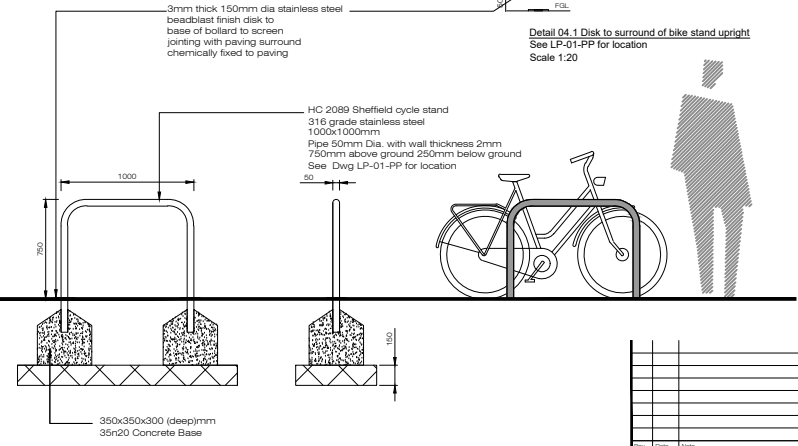
D 02 LD-04-PP Removable Bollards
See LP-01-PP for location
Scale 1:20



D 03 LD-04-PP Seating details to public open space
See LP-01-PP for location
Scale 1:20



Detail 04_1 Disk to surround of bike stand upright
See LP-01-PP for location
Scale 1:20



D 04 LD-04-PP Sheffield Style Bike Stand
See LP-01-PP for location
Scale 1:20

Rev.	Date	Notes

Project name: Proposed Strategic Housing Development at Dunshaughlin East - Phase 2	Project number: 19-048
Drawing name: Hardworks Landscape Details	Drawing number: LD-02-PP

Drawing scale @ A1: 1:20	Drawn by: ad	Checked by: ld
Status: Planning	Date: 30.09.2020	

Contact details: Linda Doyle (Director) mobile: 087 287 4195 e-mail: linda@doyleoatroit.com Dawn O'Traigh (Director) mobile: 086 300 3499 e-mail: dawn@doyleoatroit.com	Office address: Parnassus House, 29-31 Great Portland St, Dublin 2
---	---